

Certificate of Analysis

Company: Upstate Elevator Operators
 699 Pine St Suite C
 Burlington, VT 05401

Customer ID: 220906-2
Grower License #: S-000000914

Sample ID: Live Rosin Vape Cartridge, 0.5g
Lot: N/A
Matrix: Concentrate

Date Sampled: N/A
Date Received: 10/10/2022

Report Date: 10/27/2022
Date Analyzed: 10/26/2022
Analyst: CF
Report ID: C221010AZ

Terpenes Summary

Terpene	LOQ (mg/g)	Results (mg/g)	Weight (%)
α- Pinene	0.010	1.656	0.166
Camphene	0.010	0.441	0.044
β-Myrcene	0.010	2.328	0.233
b-Pinene	0.010	1.731	0.173
3-Carene	0.010	<LOQ	<LOQ
α-Terpinene	0.010	0.029	0.003
Limonene	0.010	3.548	0.355
ρ-Cymene	0.010	<LOQ	<LOQ
Ocimene	0.010	2.822	0.282
Eucalyptol	0.010	0.054	0.005
γ-Terpinene	0.010	0.047	0.005
Terpinolene	0.010	0.162	0.016
Linalool	0.010	0.889	0.089
Isopulegol	0.010	<LOQ	<LOQ
Geraniol	0.010	0.050	0.005
Caryophyllene	0.010	3.740	0.374
α-Humulene	0.010	2.201	0.220
Trans-Nerolidol	0.010	<LOQ	<LOQ
Cis-Nerolidol	0.010	<LOQ	<LOQ
Guaiol	0.010	<LOQ	<LOQ
Caryophyllene Oxide	0.010	<LOQ	<LOQ
α-Bisabolol	0.010	<LOQ	<LOQ
Total Terpenes		19.698	1.970

N/A

**Percent
Moisture**

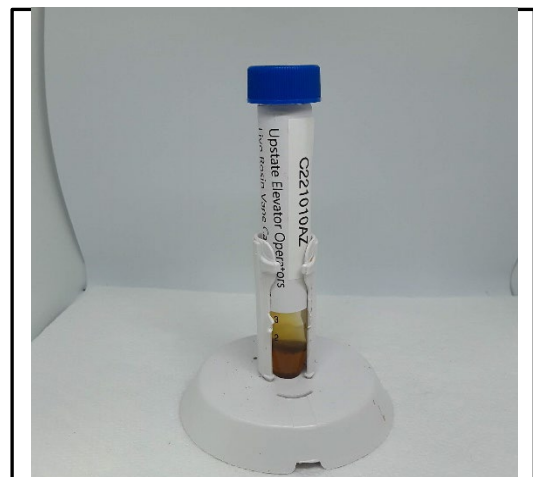
LOQ = The lowest quantity this method can reliably detect. Any terpene that was not detected is assumed to be less than the stated LOQ (<LOQ).

Terpene Methodology: Headspace Sampler, Gas Chromatography-Mass Spectrometry (GC-MS), using Perkin Elmer Clarus® SQ8 GC MS

Reagent Blanks: < LOQs for all analytes

All results reflect dry weight of material, based on % moisture of the sample.

All moisture analysis is determined by loss-on-drying measurement using OHAUS Model MB90 Moisture Content Readers.



This report shall not be reproduced except in full without approval of the laboratory. This is to provide assurance that parts of a report are not taken out of context. Results apply to the samples as received.

Certified by:

Luke E. M.

Luke Emerson Mason (Laboratory Director, Bia Diagnostics)